



Engineered to work together



Sprinkler system design software suite

The power behind **your mission**



The SprinkCAD software suite provides fire protection designers with a powerful suite of digital tools to create precise fire sprinkler system solutions.

Save time and ensure quality with tools designed to let you do more than ever before.

SprinkCAD is fully supported by its world-class team, serving fire protection professionals with the benchmark in sprinkler design since 1986.

The all-in-one solution for fire sprinkler system design. Engineered to work together.

▶ PLAN

▶ ENGINEER

▶ COMPLY

▶ TEST

▶ BID



Design complete systems from concept to construction

Perform complex hydraulic calculations to share with approving authorities

Verify compliance with N.F.P.A. 13 and EN12845 codes to expedite the permitting process

Conduct fluid delivery time tests with the only UL Listed* software that can take the place of a physical trip test

Generate detailed materials stocklists to facilitate project bidding and ordering

Tools for Revit®

Create simpler and faster Revit designs using familiar tools and functions

Draw arm-overs, sprigs, drops and goose-necks at any elevation

Build custom families in seconds with a full library of sprinklers, valves, fittings and pipe parameter

Create one or many branch lines connecting a field of sprinklers to a main pipe

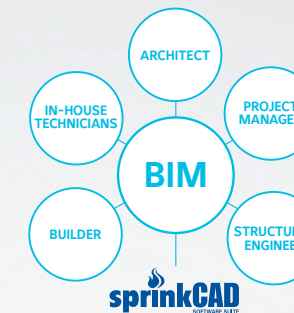
Use the Error Check command to find disconnected MEP objects

Includes options to zoom and/or select one or many elements



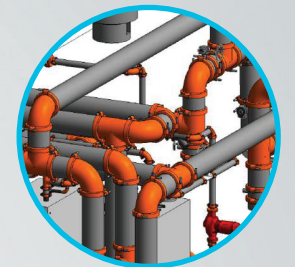
Industry-Standard Compatibility

BIM compatible
Engineered to ensure coordination with Building Information Modeling systems. Easily import architectural, structural and trade backgrounds

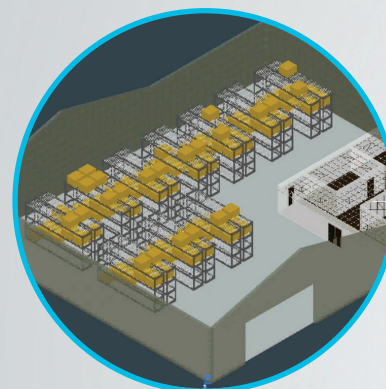


BimPort
Export SprinkCAD files to NavisWorks and Revit

Backward compatibility
Take advantage of legacy SprinkCAD designs

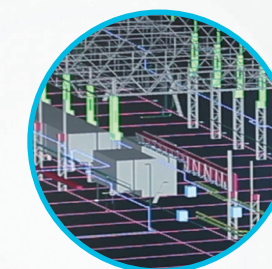


Learn more at www.sprinkcad.com



Works with AutoCAD and BricsCAD

Allowing you to design in industry-standard 3D environments



Facilitates project management

SprinkCAD designs can be combined with other construction elements, enabling project managers to perform coordination and collision detection tasks.



*Reference the UL Listing or contact JCI technical services for additional details.



About Johnson Controls Building Technologies and Solutions

Johnson Controls Building Technologies & Solutions is making the world safer, smarter and more sustainable – one building at a time. Our technology portfolio integrates every aspect of a building – whether security systems, energy management, fire suppression or HVACR – to ensure that we exceed customer expectations at all times. We operate in more than 150 countries through our unmatched network of branches and distribution channels, helping building owners, operators, engineers and contractors enhance the full lifecycle of any facility. Our arsenal of brands includes some of the most trusted names in the industry, such as Tyco®, YORK®, Metasys®, Ruskin®, Frick®, PENN®, Sabroe®, Simplex® and Grinnell®.

For more information, visit www.johnsoncontrols.com or follow us @johnsoncontrols on Twitter

North America

1400 Pennbrook Parkway,
Lansdale, PA, 19446, USA
Tel: +1 215-362-0700
Tel: +1 800-558-5236

Europe

Kopersteden 1
Enschede, Overijssel 7547 TJ
The Netherlands
Tel: +31 (0) 53 428 4444

Middle East

Internet City, Office Park Building,
Block D, Floor 3
Dubai, United Arab Emirates
Tel: +971 4455 0700

Asia Pacific

2 Serangoon North Avenue 5
#07-01
Singapore 554911
Tel: +65 6577 4360

Products displayed are for visual representation only. Actual products may vary. The information provided in this brochure is provided for informational purposes only. The materials are general in nature; they are not offered as advice on a particular matter and should not be relied on as such. The materials contained in this brochure are the copyrighted property of Johnson Controls unless a separate copyright notice is placed on the material.

© 2019 Johnson Controls. All rights reserved.

The power behind your mission

